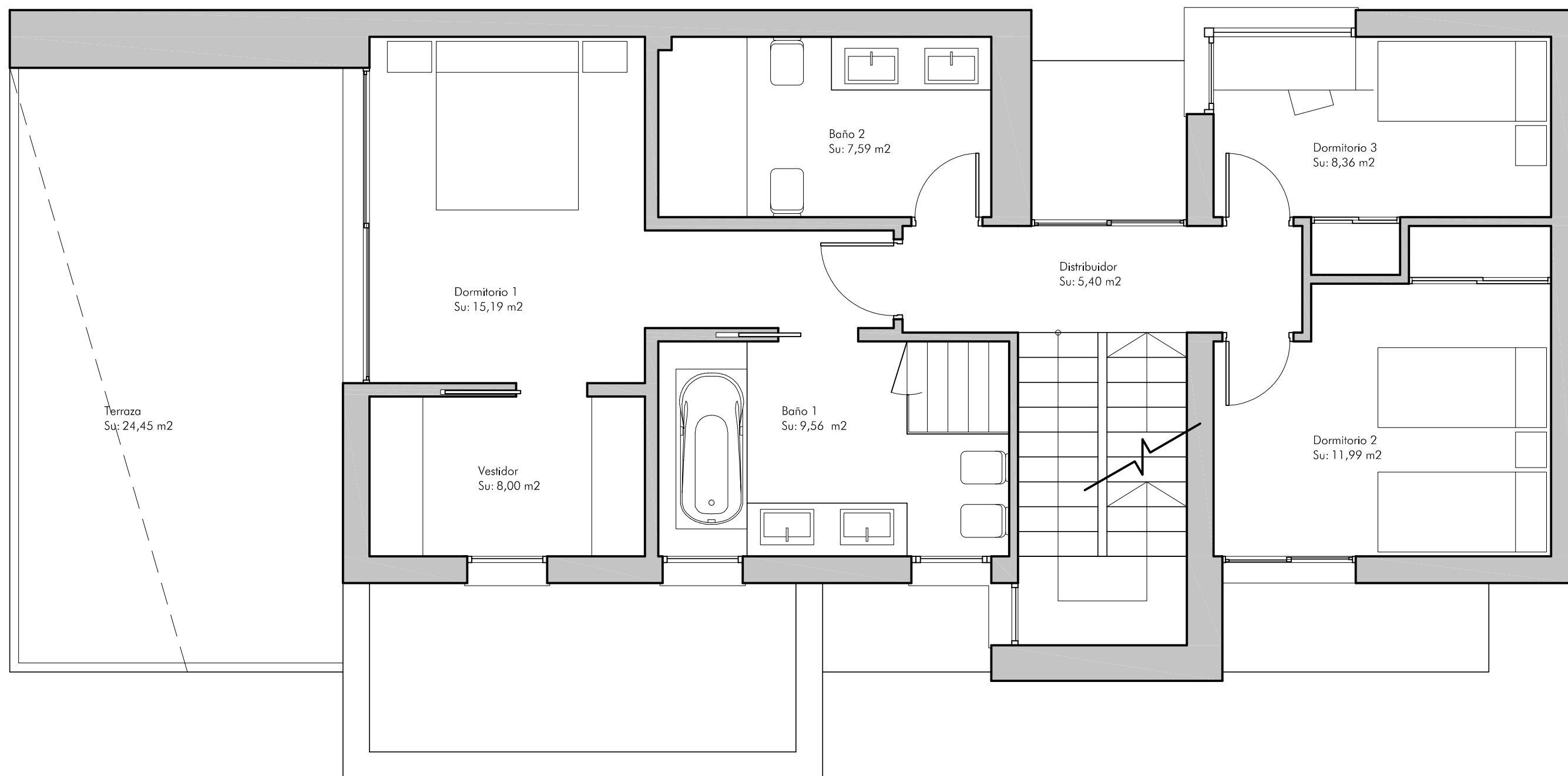


SUPERFICIE CONSTRUIDA CERRADA  
PB = 78,11 m<sup>2</sup>  
P1 = 88,09 m<sup>2</sup>  
Total = 166,20 m<sup>2</sup>





SUPERFICIE CONSTRUIDA CERRADA  
PB = 78,11 m<sup>2</sup>  
P1 = 88,09 m<sup>2</sup>  
Total = 166,20 m<sup>2</sup>

